

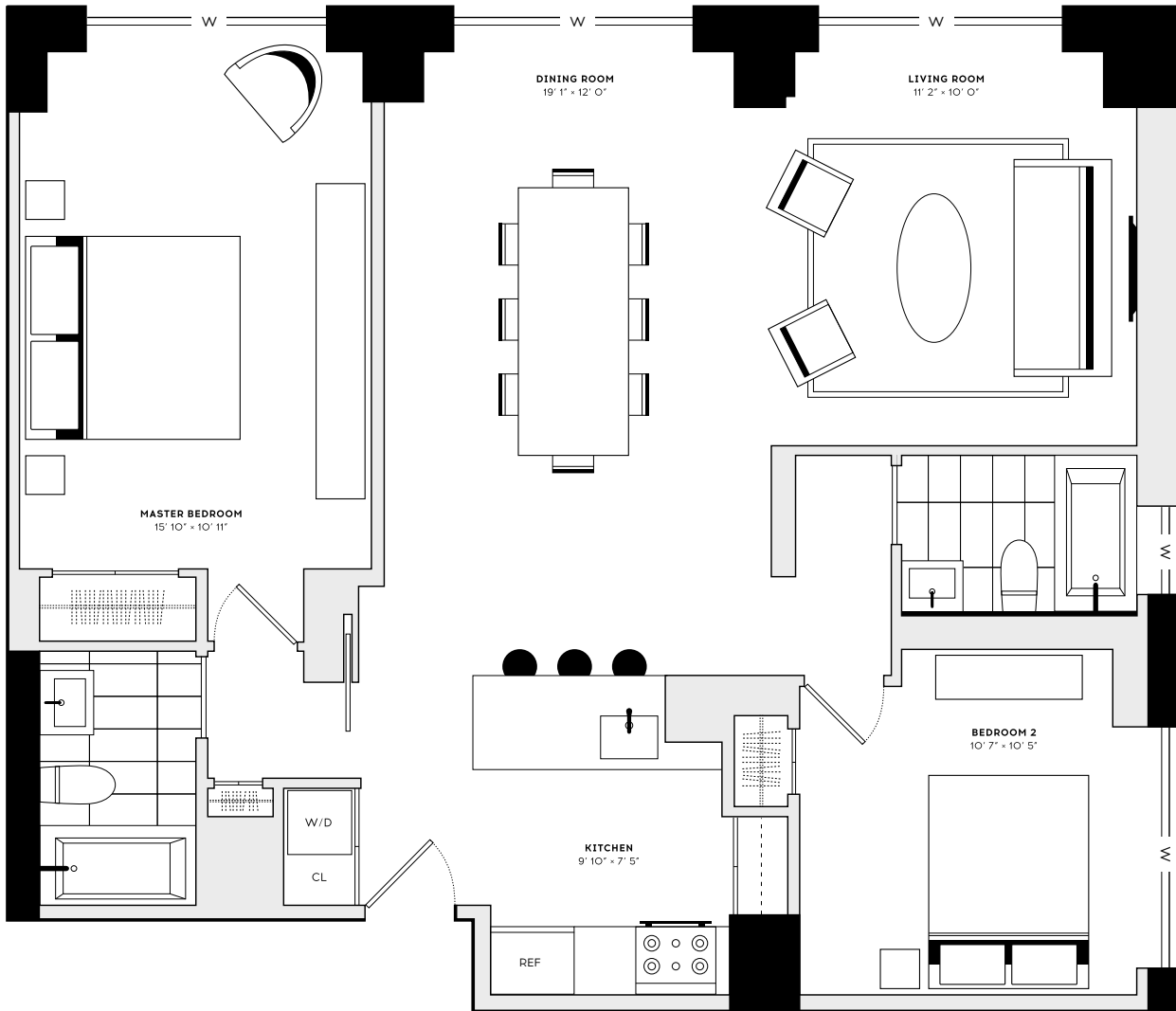
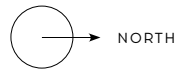
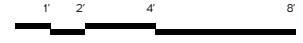
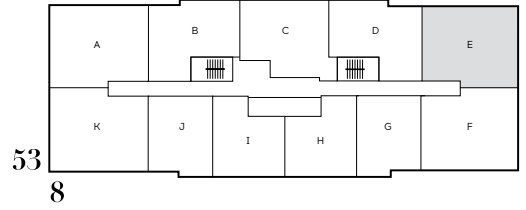
Residence E

TWO BEDROOMS TWO BATHS FLOORS 11-15, 21-25 NORTH AND WEST VIEWS
 WASHER / DRYER 1,039 SQ. FT. / 96.53 SQ. METERS

5" WHITE OAK FLOORING THROUGHOUT
 24" BOSCH WASHER/DRYER

KITCHEN
 WHITE LACQUER CABINETS WITH WHITE QUARTZ COUNTERTOPS; BOSCH APPLIANCES
 THROUGHOUT, INCLUDING INTEGRATED REFRIGERATOR, OVEN WITH GAS COOKTOP AND
 DISHWASHER PLUS STAINLESS STEEL MICROWAVE; GARBAGE DISPOSAL

BATHROOM
 CUSTOM VANITY AND CABINET, GLASSOS FLOORING AND WALLS WITH BARDIGLIO FEATURE
 WALL IN MASTER BATH AND PRIMA GREY FEATURE WALL IN SECONDARY BATH, TOTO TOILET,
 KOHLER FIXTURES THROUGHOUT



The complete offering terms are an offering plan available from Sponsor. File No. CD-18-0300. Sponsor: Hill Z&J, 2601 West End Street, Owner: LLC 600 Hudson Avenue, New York, NY 10022. All dimensions are approximate and subject to normal construction variances and tolerances. Square footage includes the usable floor area. Sponsor reserves the right to make changes in accordance with the terms of the Offering Plan. Trans and dimensions may contain minor variations from floor to floor.

**FIFTY
 THIRD
 AND
 EIGHTH**

301 W53RD ST STE 11F NEW YORK 10019

T. 212 757 0053

53RDAND8TH.COM

