

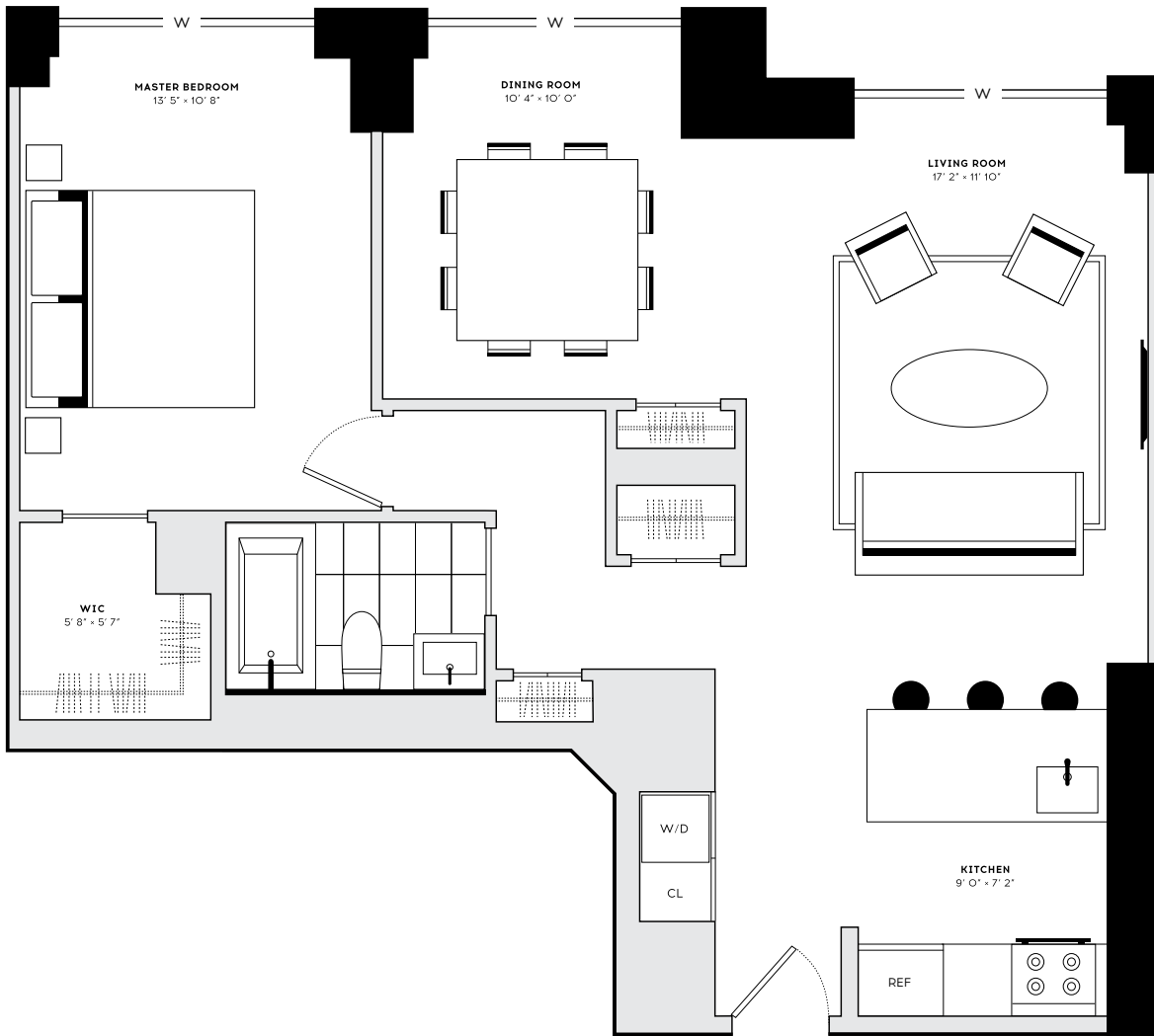
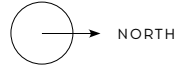
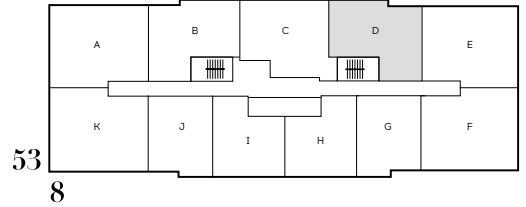
# Residence D

ONE BEDROOM ONE BATH FLOORS 3-6, 11-15, 21-25 WEST VIEWS  
WASHER / DRYER 806 SQ. FT. / 74.88 SQ METERS

5" WHITE OAK FLOORING THROUGHOUT  
24" BOSCH WASHER/DRYER

**KITCHEN**  
WHITE LACQUER CABINETS WITH WHITE QUARTZ COUNTERTOPS; BOSCH APPLIANCES THROUGHOUT, INCLUDING INTEGRATED REFRIGERATOR, OVEN WITH GAS COOKTOP AND DISHWASHER PLUS STAINLESS STEEL MICROWAVE; GARBAGE DISPOSAL

**BATHROOM**  
CUSTOM VANITY AND CABINET, GLASSOS FLOORING AND WALLS WITH BARDIGLIO FEATURE WALL IN MASTER BATH\* AND PRIMA GREY FEATURE WALL IN SECONDARY BATH, TOTO TOILET, KOHLER FIXTURES THROUGHOUT



\*The complete offering terms are in an offering plan available from Sponsor. File No. CDB-C000. Sponsor: REZ 801 West End Street Owner LLC, 600 Hudson Avenue, 11th floor, New York, NY 10022. All dimensions are approximate and subject to normal construction variances and tolerances. Sponsor reserves the right to make changes in accordance with the terms of the Offering Plan. Plans and dimensions may contain minor variations from floor to floor.

