

April 18, 2016

## Residential Properties With Fab Rooftop Spaces

With spring underway, new residential properties featuring rooftop spaces with stunning views of New York City's skylines are on the rise.

by New York Spaces



Enclave at the Cathedral

**Enclave at the Cathedral:** Designed by Handel Architects, Enclave at the Cathedral, The Brodsky Organization's two residential rental towers featuring 430 residences in Morningside Heights, feature over 10,000 square feet of indoor and outdoor amenities ideal for relaxing and unwinding, including two roof decks with views of the City, Morningside Park and The Close.



Fifty Third and Eighth.

**Fifty Third and Eighth:** Situated in the heart of Hell's Kitchen, HFZ Capital Group's 262 residence condominium Fifty Third & Eighth features a rooftop terrace offering 360 degree, unobstructed views of the Manhattan skyline, Hudson River and Central Park, as well as lush gardens designed by Terrain and polished decking throughout featuring BBQ grills, picnic tables and a sundeck.



Emerald Green.

**Emerald Green,** a luxury Glenwood building in the heart of Midtown West, features two lush rooftop terraces offering stunning views of the Empire State Building, reflective heat pavers and special rainwater retention systems. The building holds 569 rental apartments ranging from studio to two-bedroom. Amenities in the building consist of a 24-hour doorman, a pool, children's playroom and screening room.





393 West End Ave.

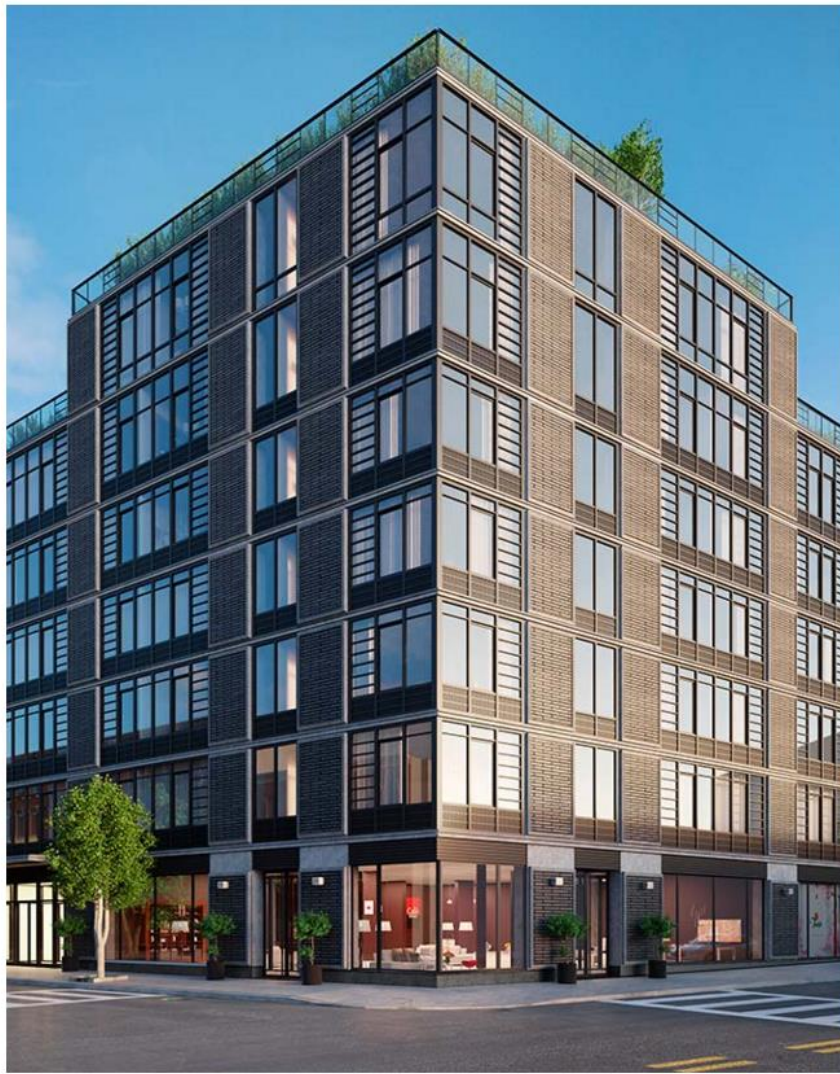
**393 West End Ave**, Simon Baron Development's newest luxury conversion property, features a resident roof deck with breathtaking views of the New York City skyline and Hudson River that is perfect for entertaining and relaxing.

## BROOKLYN



51 Jay Street.

**51 Jay St**, the 74-home luxury warehouse conversion nestled amongst the Dumbo cobblestones, offers residents unmatched views of the Manhattan skyline and surrounding waterfront Brooklyn neighborhood at the rooftop terrace. Co-developed by Slate Property Group and Adam America Real Estate, the property will be home to an outdoor shower and fireplace as well as an immense outdoor kitchen, perfect for a BBQ or quiet dinner for two.



Waverly Brooklyn.

**Waverly Brooklyn**, developed by Orange Management is a 48-unit condominium rising at 500 Waverly in Clinton Hill. The tower will offer residents a 1,538 square-foot landscaped and furnished courtyard with gas grills and communal area as well as a 2,053-square-foot landscaped and furnished rooftop garden with outdoor shower and NYC views.

## QUEENS



The Jackson.

**The Jackson**, a 56-unit luxury condo building in Long Island City, will feature a rooftop terrace for residents to enjoy. The landscaped entertaining and lounge area features private cabanas, BBQ stations and striking views of NYC. Modern Spaces is handling the marketing and sales for the project.





Liv@

**Liv@**, a 39-unit condo in Long Island City, features a state-of-the-art rooftop fitness center, which opens up onto a resident-only rooftop deck. The outdoor space features BBQ stations and a lounge where residents can take in the views of the East River and the Manhattan skyline. Modern Spaces is handling the marketing and sales for the project.



The Baker House.

**The Baker House**, a 48-unit rental building in Long Island City, includes a rooftop terrace and gym for residents of the nine-story property. The landscaped space includes a wooden pergola, outdoor seating and views of the Queensboro Bridge and Manhattan skyline. Modern Spaces is handling the marketing and leasing for the project.



The Grand at Sky View Parc.

**The Grand at Sky View Parc**, a three-tower luxury condominium in Flushing, Queens, rests on a six-acre rooftop, allowing residences to have access to an endless variety of outdoor activities: two tennis courts, a basketball court, running track, children's playground, dog run and putting green. Additionally, the development hired a feng shui master to create several areas within the residence to abide by such principles such as landscaped plants, fountains purposely placed near entrances, curved roof forms and more.