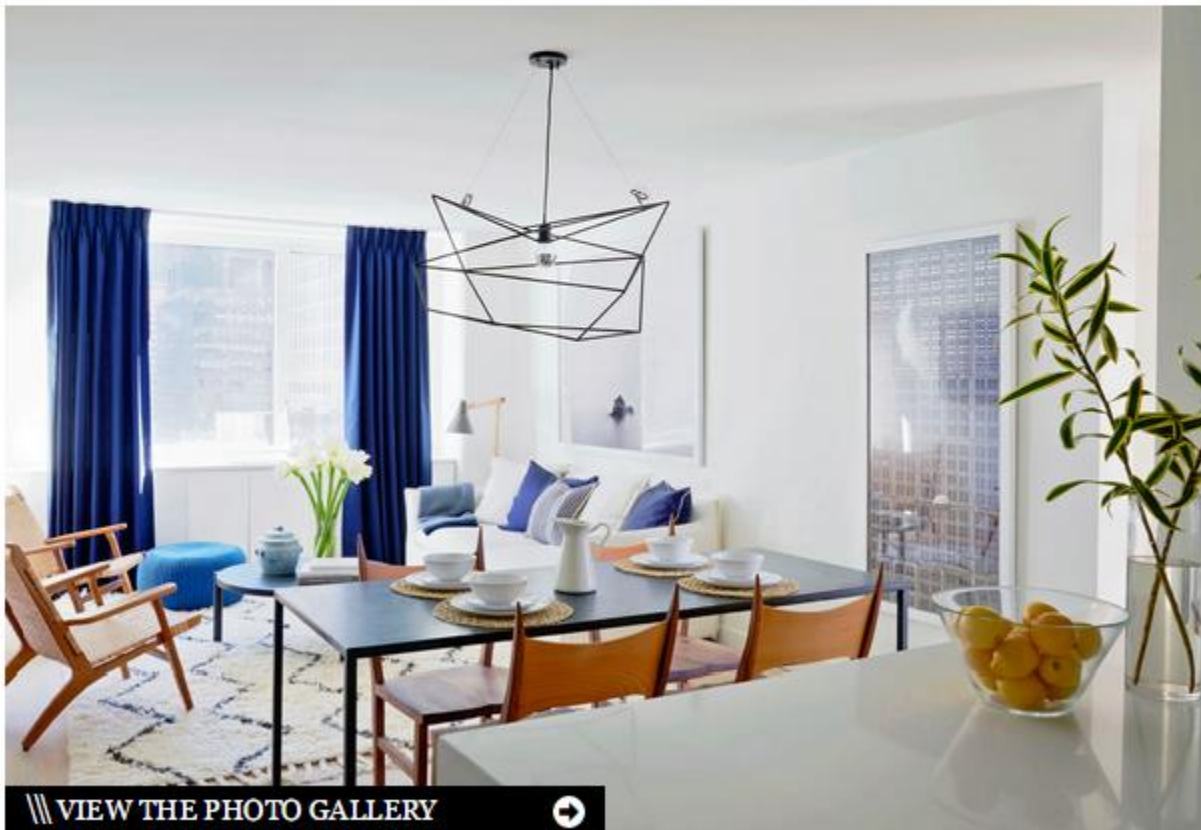


MODEL CONDOS IN HELL'S KITCHEN BY ASH NYC

Posted by [Caroline Williamson](#) on 07.15.15 in [Interior Design](#), [Main](#)

[HFZ Capital Group](#), a Manhattan-based real estate investment and development company, partnered with interior design firm [ASH NYC](#) to design a trio of model residences in the recently launched, 25-story condominium building, [Fifty Third and Eighth](#). Each condo was tailored to a particular personality or lifestyle to give homebuyers a sense of what their own space could be, while also working with the building's distinct finishes. The one-, two-, and three-bedroom residences give you a glimpse of what it would be like to live in this luxury Hell's Kitchen condominium.



VIEW THE PHOTO GALLERY



The three-bedroom residence was designed to house a young family with calming neutrals paired with blue accents that were inspired by the Hamptons.



Three-bedroom



Three-bedroom



Three-bedroom



The two-bedroom unit was designed for a sophisticated NYC bachelor with dark woods, architecturally-inspired furniture, and a palette of red, blue, and white hues.



Two-bedroom



Two-bedroom



The one-bedroom condo was crafted with a young, avant-garde woman in mind with furnishings in white, brass, and a few saturated colors thrown in the mix.



One-bedroom



One-bedroom



One-bedroom



Photos by Christian Harder.

QUINN