

< 1 of 5 >

## Tour a \$3.5 Million Condo in Hell's Kitchen

Fifty Third and Eighth just listed a space that's steps away from Central Park

Written by [Atalie Gimmel](#)

### Entryway

Located inside residential building Fifty Third and Eighth, residence 20CD is a three-bedroom condo in Manhattan's Hell's Kitchen neighborhood.

The space features an oversized living area (ideal for hosting cocktail parties and get-togethers) and comes with a fun buyer perk: the opportunity to purchase the home fully-furnished by modern retailer Design Within Reach. The 25-floor doorman building itself offers premiere amenities like a fully equipped fitness center, roof terrace, private dog park, and on-site valet, and its close proximity to some of New York's top sites—including Central Park, MoMA, and Columbus Circle—proves this property to be a true bang for your buck.

This space is currently listed at \$3.5 million.



Fifty Third and Eighth

< 2 of 5 >

## Tour a \$3.5 Million Condo in Hell's Kitchen

Fifty Third and Eighth just listed a space that's steps away from Central Park

Written by [Atalie Gimmel](#)

### Living Room



Fifty Third and Eighth

< 3 of 5 >

## Tour a \$3.5 Million Condo in Hell's Kitchen

Fifty Third and Eighth just listed a space that's steps away from Central Park

Written by [Atalie Gimmel](#)

### Living Room



Fifty Third and Eighth

< 4 of 5 >

## Tour a \$3.5 Million Condo in Hell's Kitchen

Fifty Third and Eighth just listed a space that's steps away from Central Park

Written by [Atalie Gimmel](#)

### Dining Area



Fifty Third and Eighth

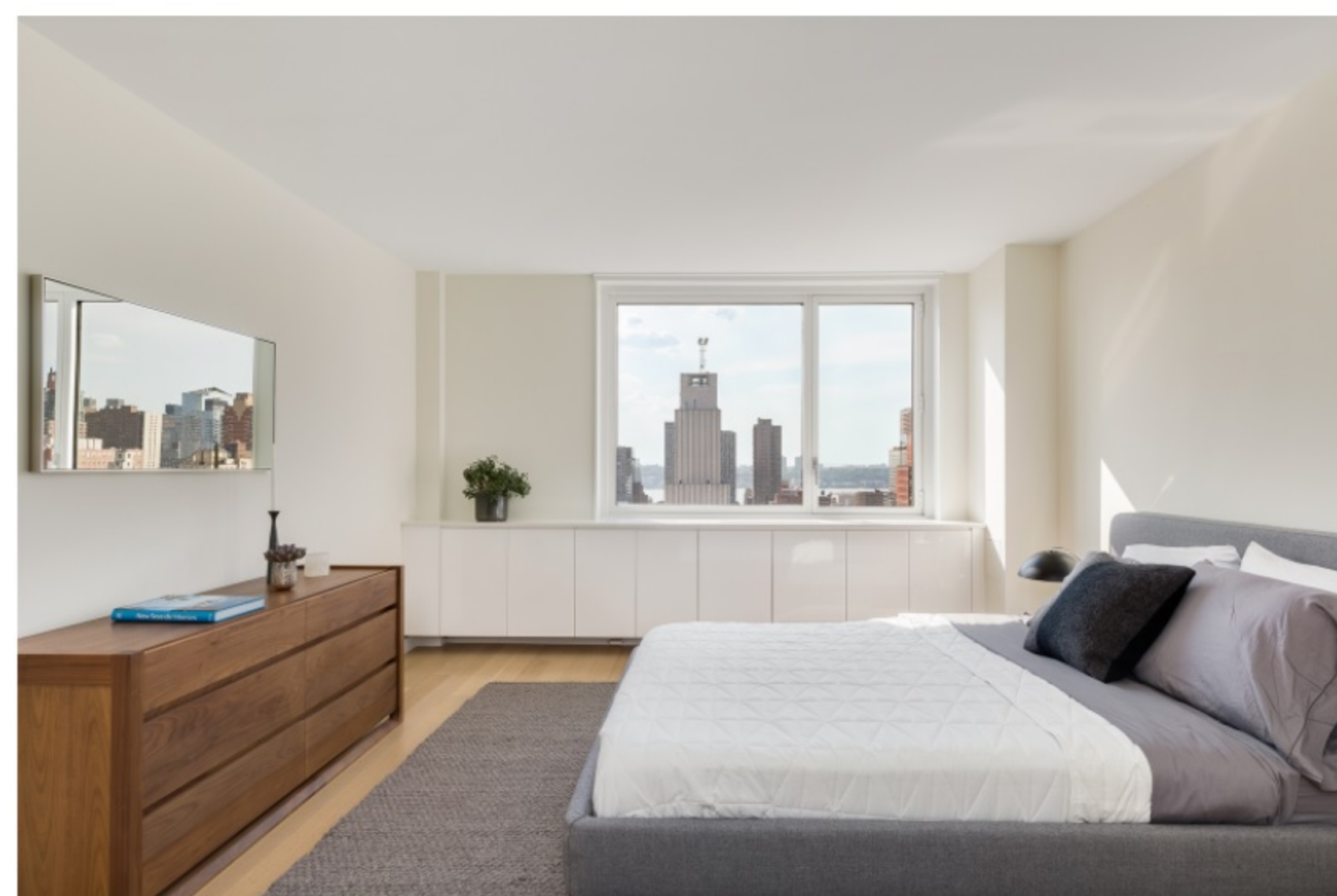
< 5 of 5 >

## Tour a \$3.5 Million Condo in Hell's Kitchen

Fifty Third and Eighth just listed a space that's steps away from Central Park

Written by [Atalie Gimmel](#)

### Bedroom



Fifty Third and Eighth